



harn[®] *moving innovations* ▶

BASIC drawer runner

product
assembly
installation

2030 Drawer Runner
Single Extension



3011 Drawer Runner
Full Extension



Accessories

8

Assembly and Insertion

9

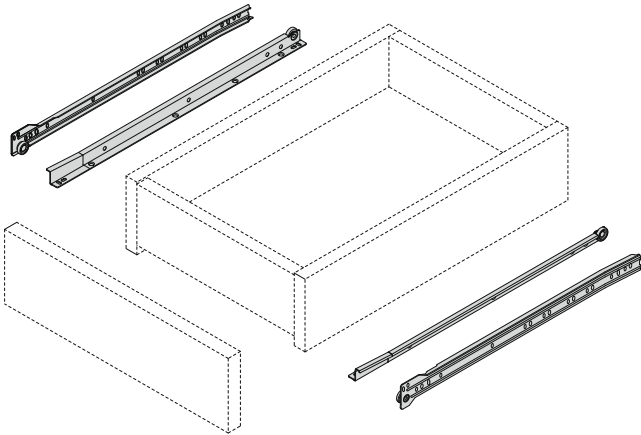
BASIC

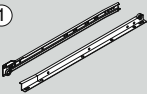
BASIC

2030 Drawer Runners - Single Extension



- Single extension
- Bottom mounted drawer profiles
- Epoxy coated
- Load capacity of 30kg
- Self closing feature
- Smooth rolling mechanism
- Double out-stop safety feature
- Locked-in position when fully extended



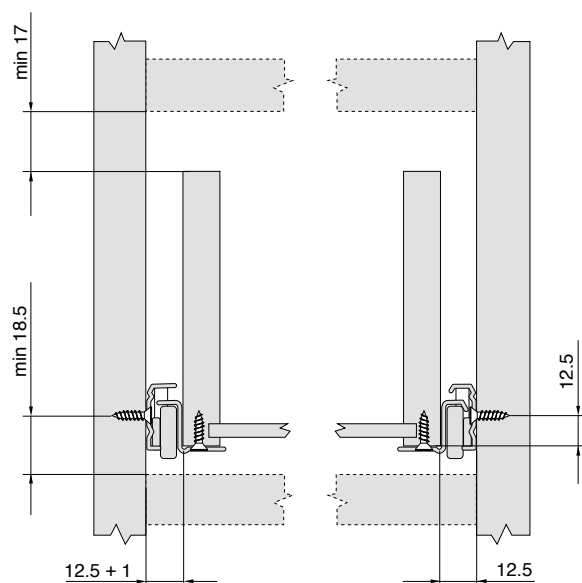
<div> <div>1</div>  </div>	<div>Basic Drawer Runners</div> <div>Left / Right :</div>
Runner Length	
250mm	2030.25.XX
270mm	2030.27.XX
300mm	2030.30.XX
350mm	2030.35.XX
400mm	2030.40.XX
450mm	2030.45.XX
500mm	2030.50.XX
550mm	2030.55.XX
600mm	2030.60.XX
650mm	2030.65.XX
700mm	2030.70.XX

Colour Code XX

Standard : 01 – R9010 White

Available upon Request : 21-R7004 Grey 12-R9005 Black 11-R8017 Brown

Space Requirements and Installation Dimensions



Cabinet Profile Screw Positions

Drawer Dimensions

Runner Length

Min. internal cabinet depth = Runner length + 3 mm

250mm

270mm

300mm

350mm

400mm

450mm

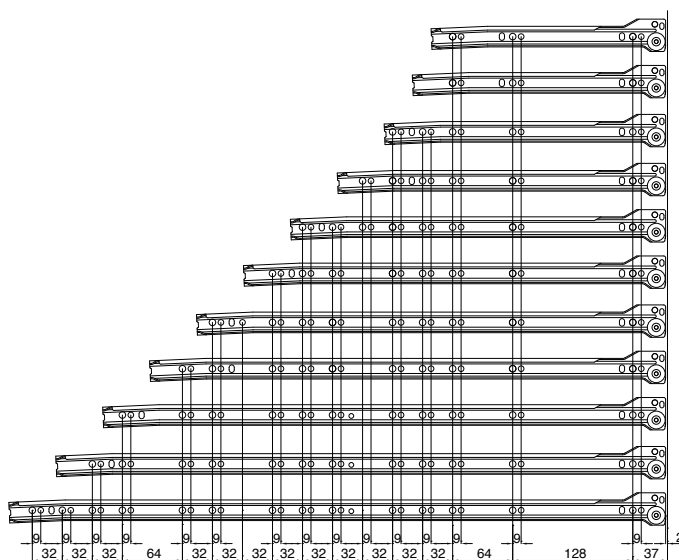
500mm

550mm

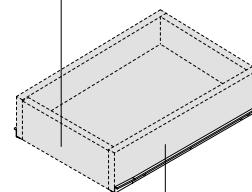
600mm

650mm

700mm

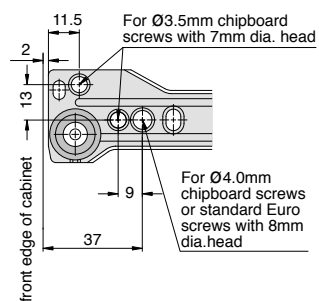


Drawer width = internal cabinet width - 25mm



Drawer length = runner length

Drilling pattern for cabinet member



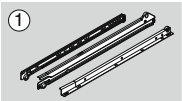
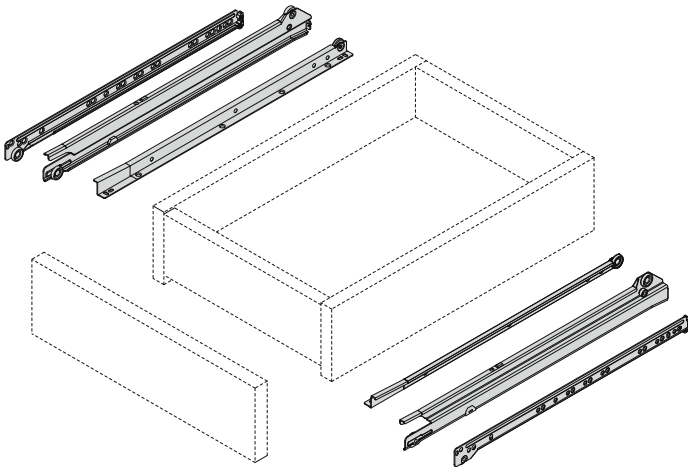
BASIC

3011 Drawer Runners - Full Extension

BASIC



- Full extension
- Bottom mounted drawer profiles
- Epoxy coated
- Load capacity of 40kg
- Self closing feature
- Smooth rolling mechanism
- Double out-stop safety feature
- Locked-in position when fully extended

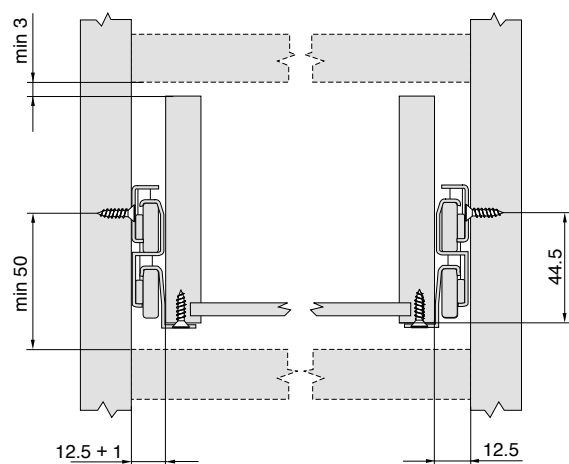


Basic Drawer Runners
Left / Right :

Runner Length	
350mm	3011.35.XX
400mm	3011.40.XX
450mm	3011.45.XX
500mm	3011.50.XX
550mm	3011.55.XX

Colour Code XX
Standard : 01 – R9010 White
Available upon Request : 21-R7004 Grey 12-R9005 Black 11-R8017 Brown

Space Requirements and Installation Dimensions



Cabinet Profile Screw Positions

Runner Length

350mm

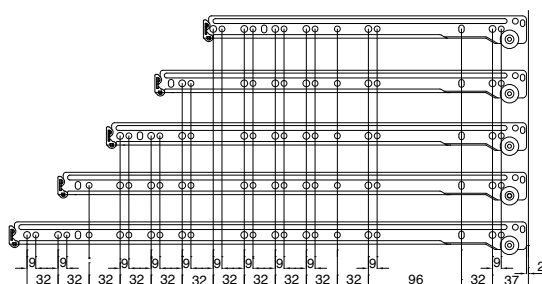
400mm

450mm

500mm

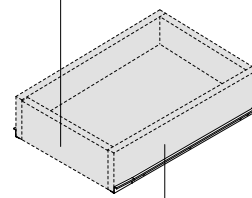
550mm

Min. internal cabinet depth = Runner length + 8 mm



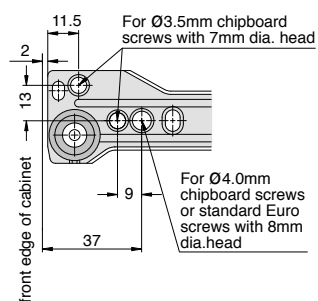
Drawer Dimensions

Drawer width = internal cabinet width - 25mm



Drawer length = runner length

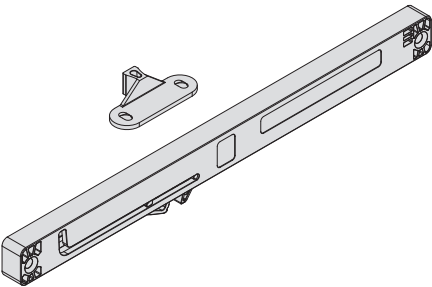
Drilling pattern for cabinet member



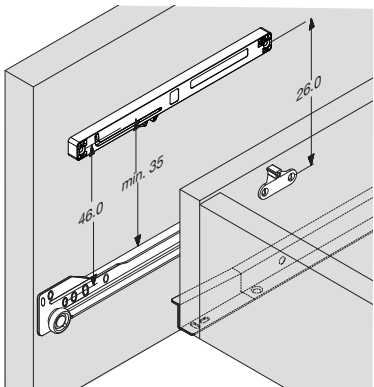
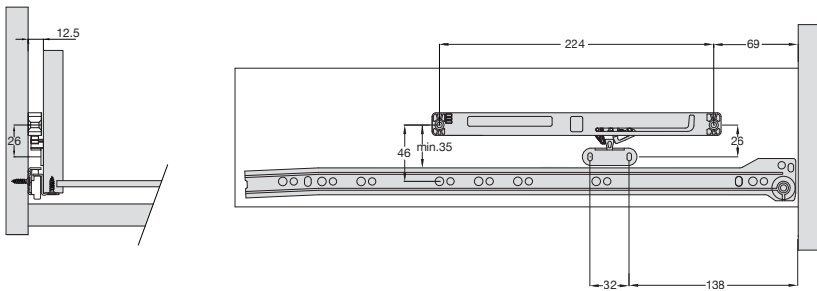
Basic Sylent

Article No.

RSC.2510



Application



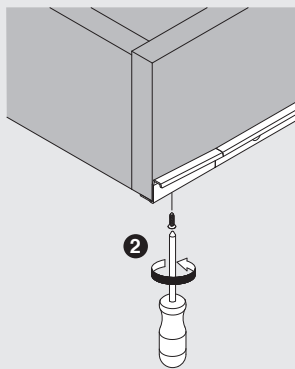
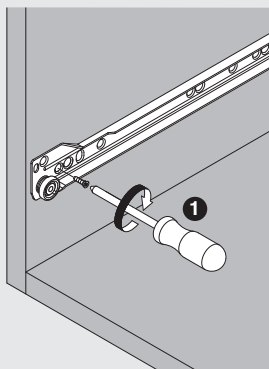
Note :

1. Drawers using only one RSC.2510 must install it on the right side of the cabinet.
2. Drawer widths 800mm and above requires a RSC.2510 to be installed on each side of the cabinet.
3. All measurements are quoted in milimeter.

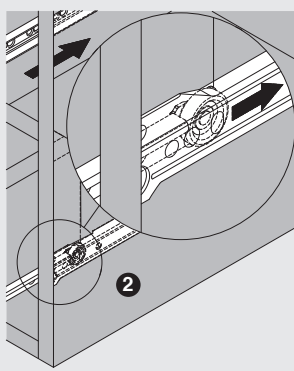
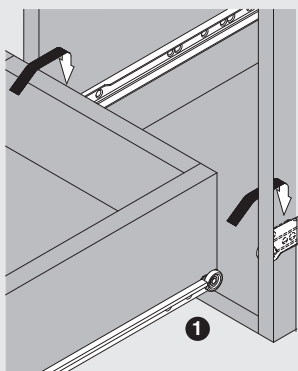
BASIC

Assembly and Insertion

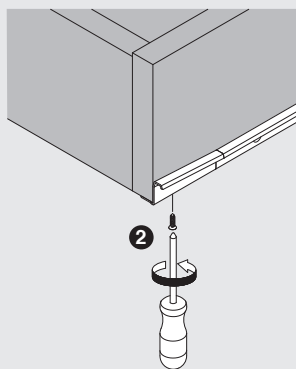
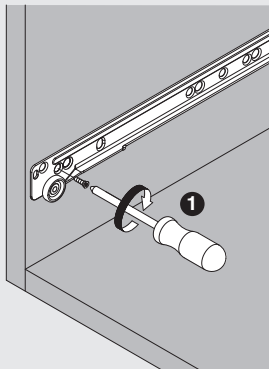
Drawer Assembly - Single Extension



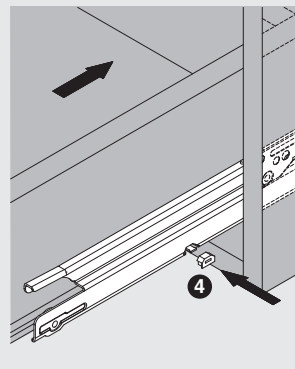
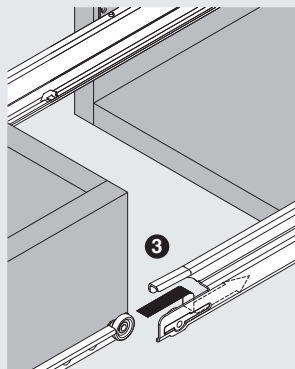
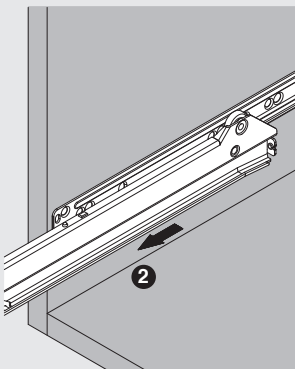
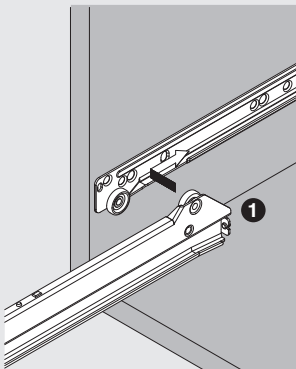
Drawer Insertion - Single Extension



Drawer Assembly - Full Extension



Drawer Insertion - Full Extension



Notes

BASIC

Notes

Aksesori Setia Sdn.Bhd.

Company No. 326521-U

Plot 32, Lengkok Rishah 1,
Kawasan Perindustrian Silibin,
30100 Ipoh, Perak, Malaysia.

Tel : (60) 5 - 527 6055

Fax : (60) 5 - 527 6063

E-mail : info@harn.com

www.harn.com

harn[®]